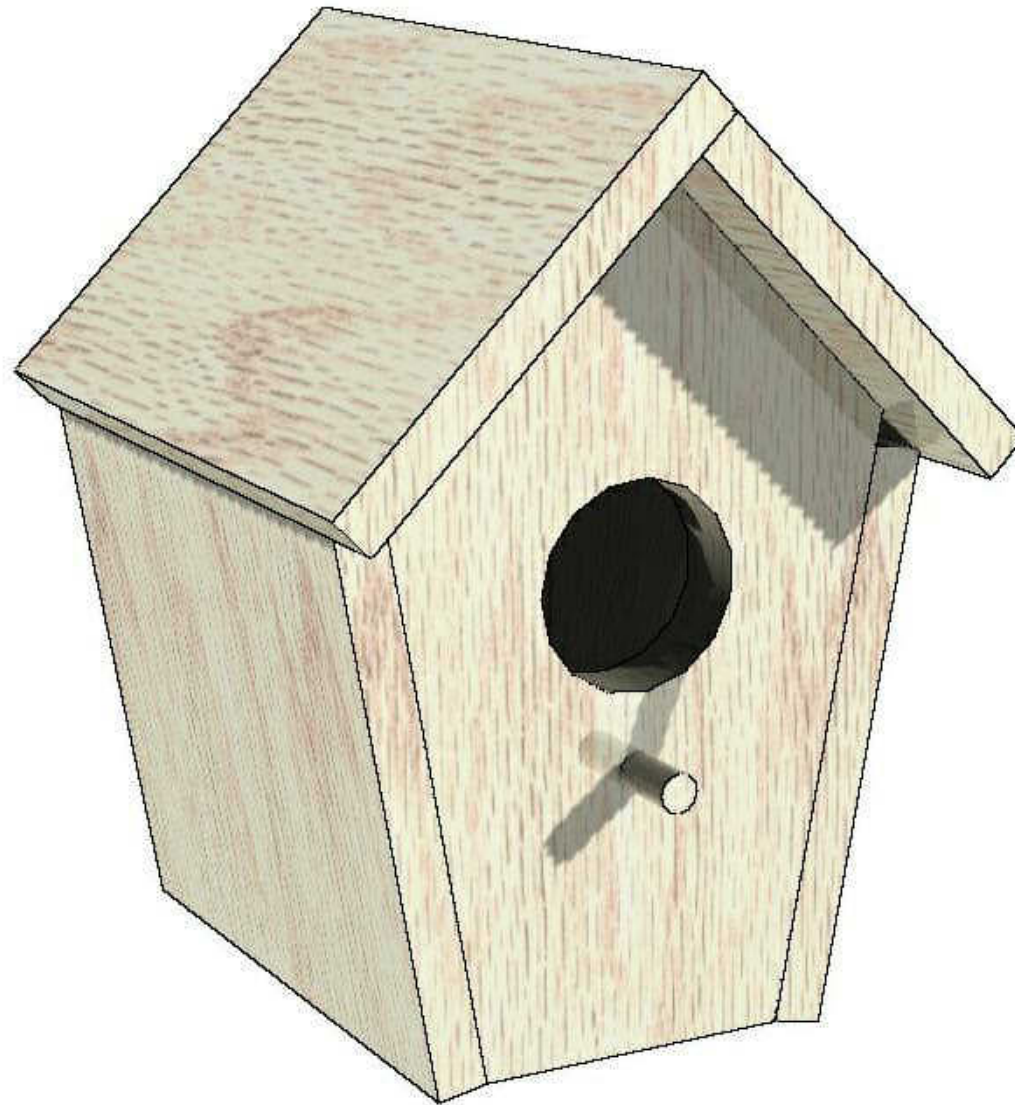


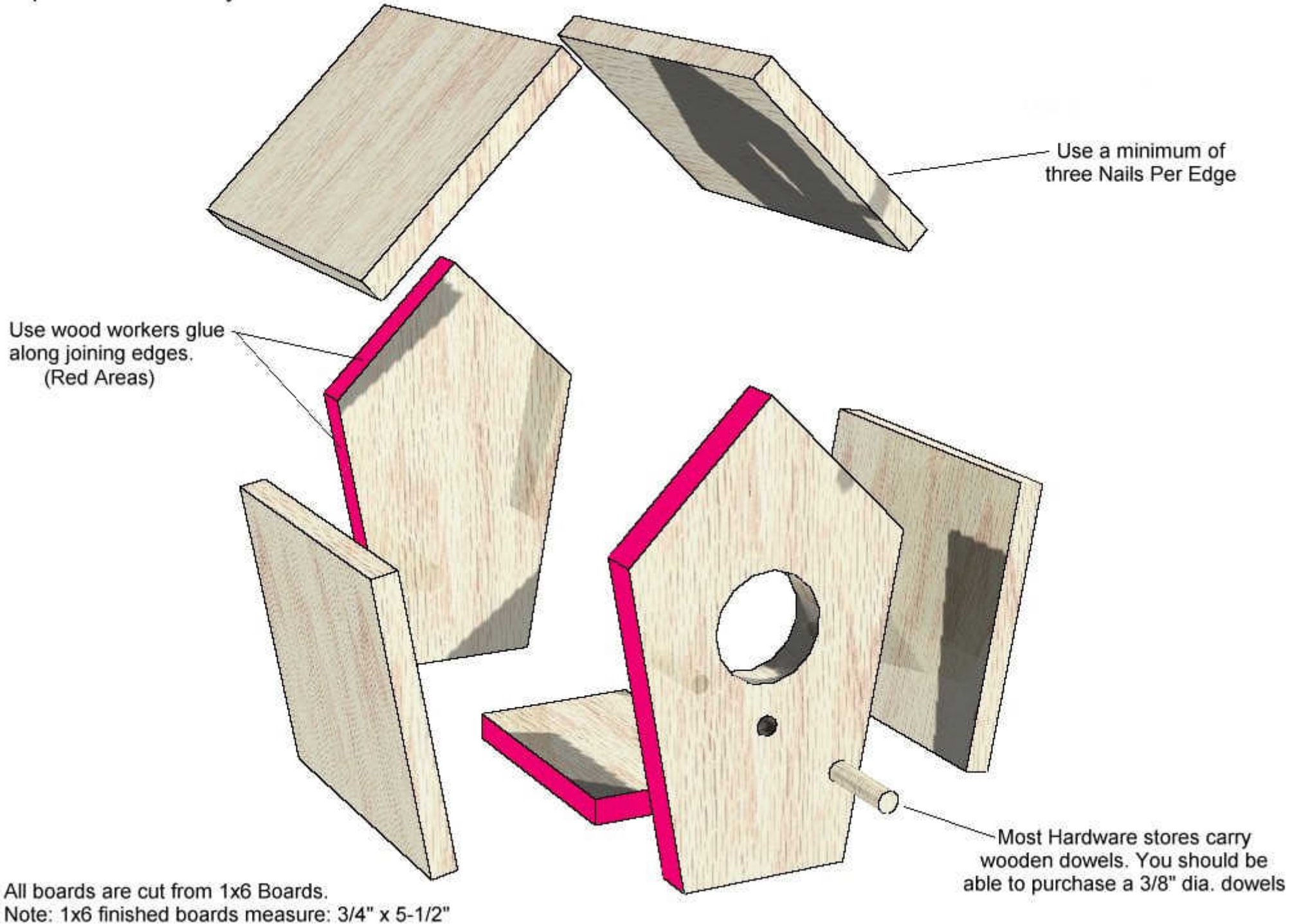
Bird House Plans

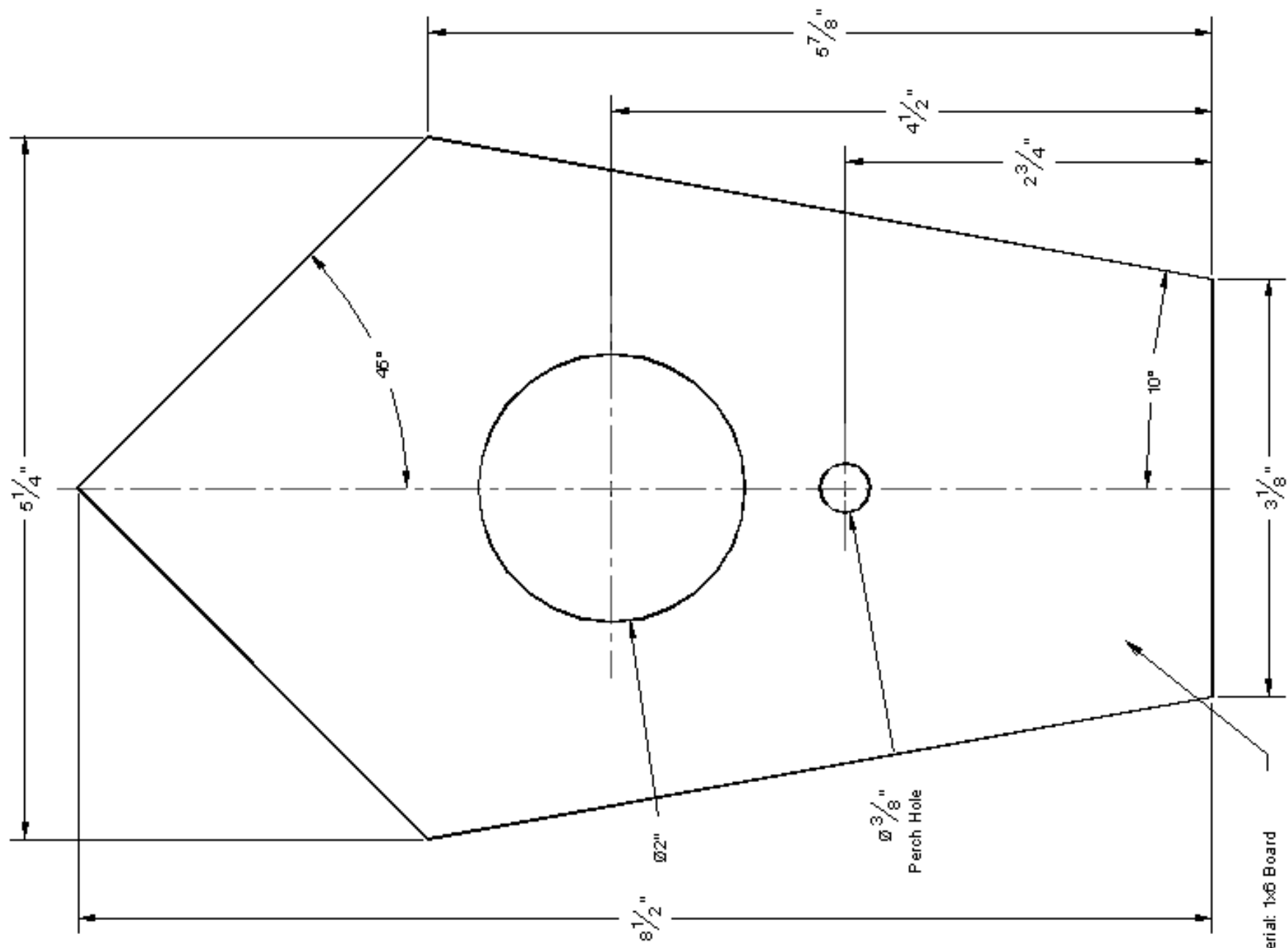


Materials List

Item No.	Description	Size	Number Required
Part #1	Front & Rear Plates	8-1/2" x 5-1/4" x 3/4"	2
Part #2	Side Plates	8-1/2" x 5-9/16" x 3/4"	2
Part #3	Bottom Plate	5" x 3-1/8" x 3/4"	1
Part #4	Roof Plates	7-1/2" x 5-3/16" x 3/4"	2
Part #5	Pirch	3/8" x 1-1/2" dia. Wood Dowel	1

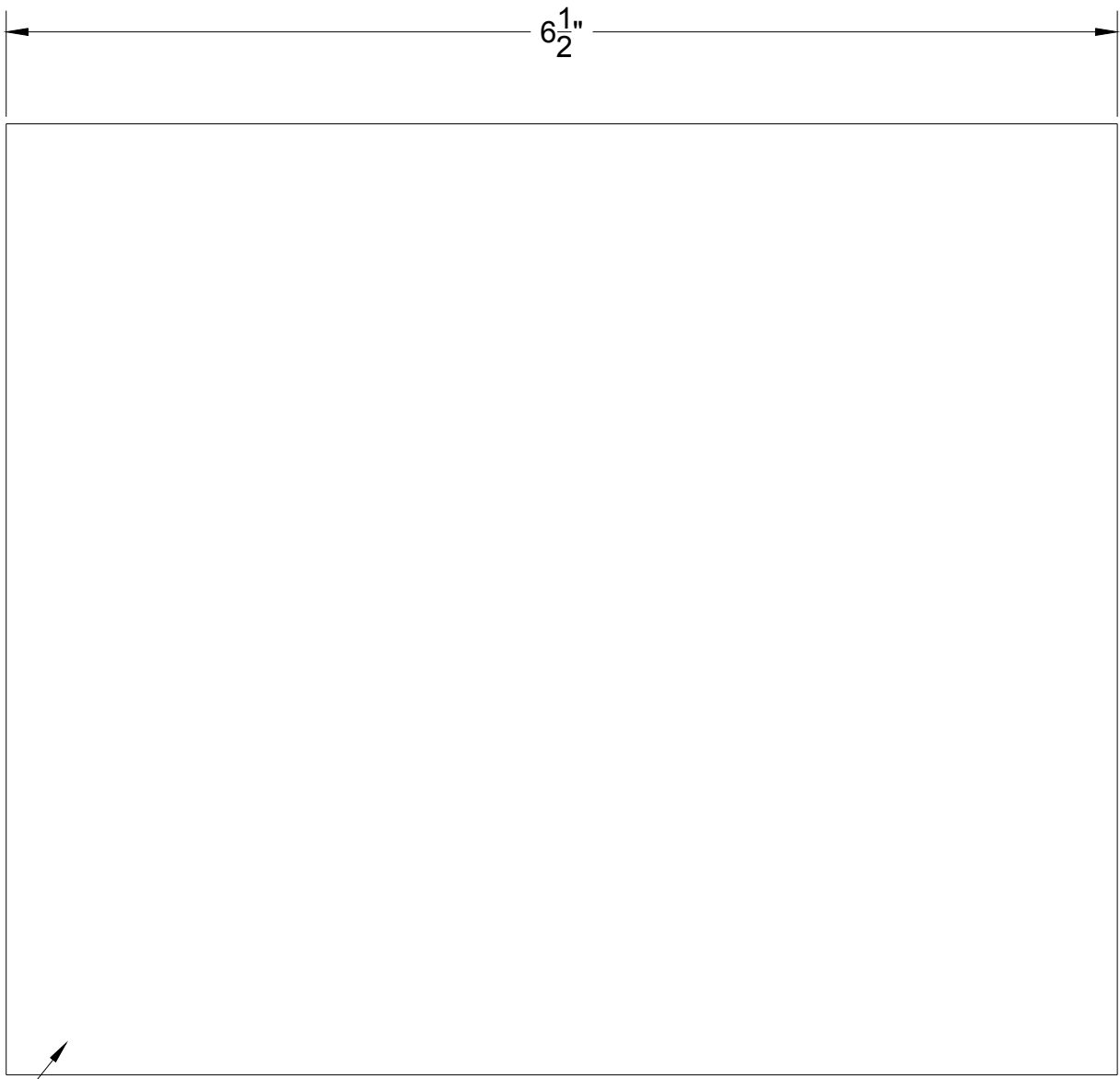
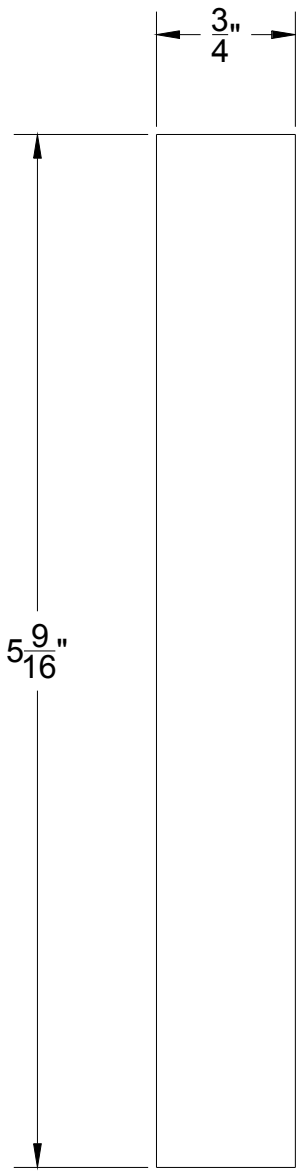
Exploded Assembly View



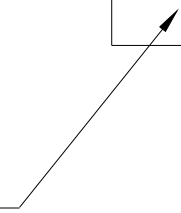


Material: 1x6 Board

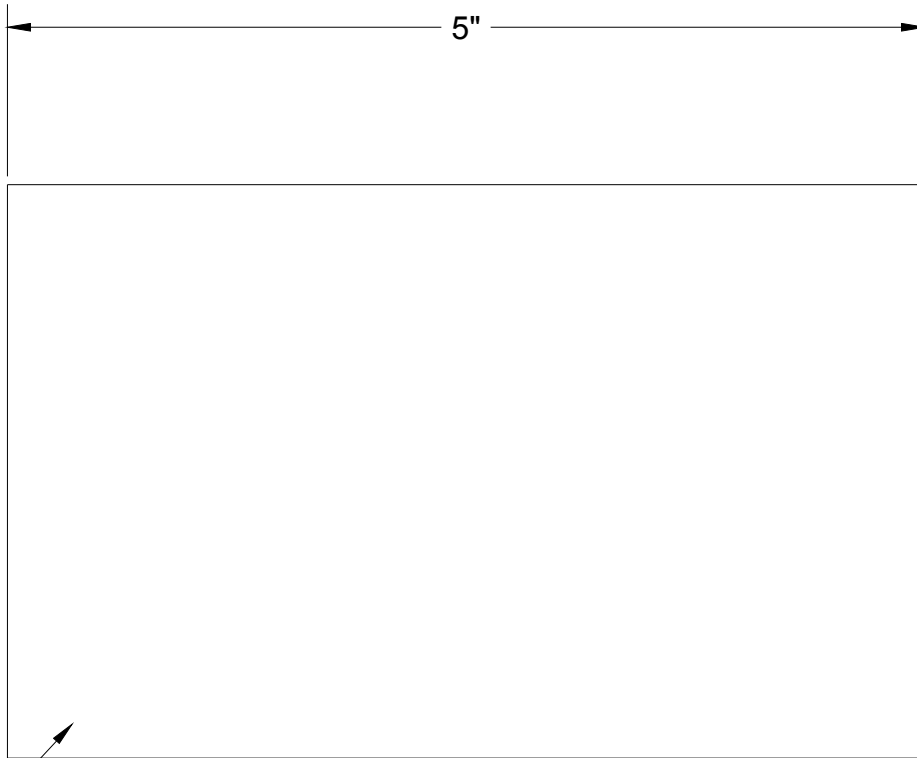
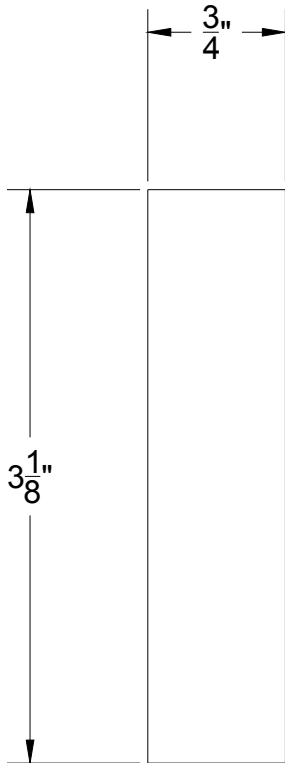
End Plate: Omit holes for rear end plate.



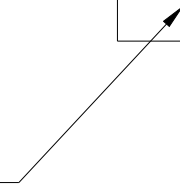
Material: 1x6 Board



Side Plate



Material: 1x6 Board



Floor Plate

$\frac{3}{4}$ "

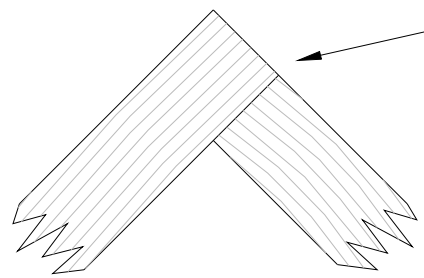
$7\frac{1}{2}$ "

$4\frac{7}{16}$ "
Left Roof

$5\frac{3}{16}$ "
Right Roof

Material: 1x6 Board

Roof Dimension are different to allow overlap at the top of the roof.



Roof Plate